

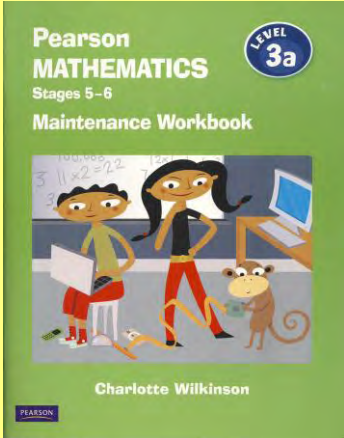


# The Wilkie Way

## Newsletter June 2011

### What's New?

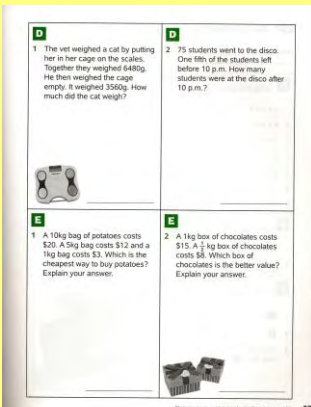
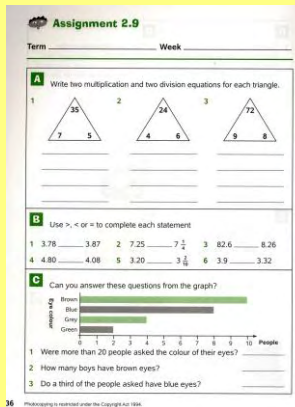
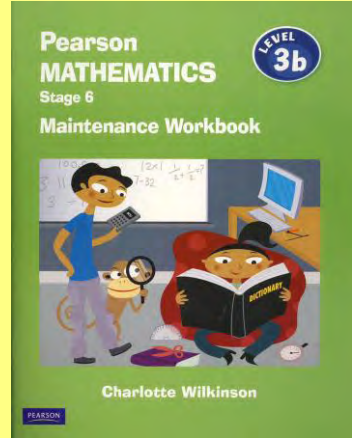
### Maintenance Workbooks for Level 3



These books are designed to provide students with the opportunity to practice the mathematics knowledge they have previously covered but are still consolidating.

They also provide students with practice at reading and understanding word problems.

The practice covers all strands of the curriculum.

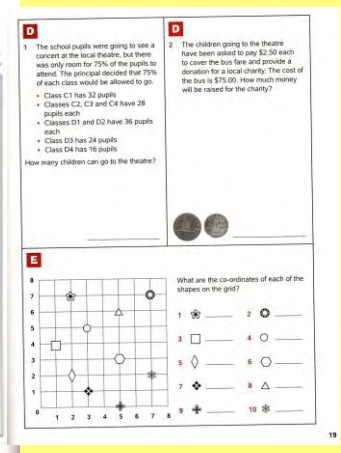
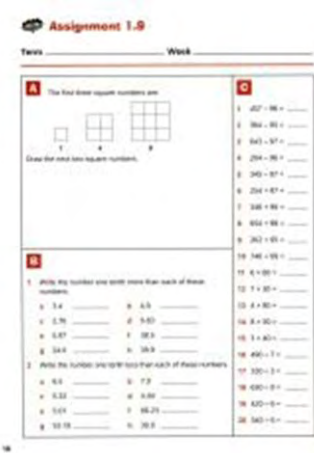
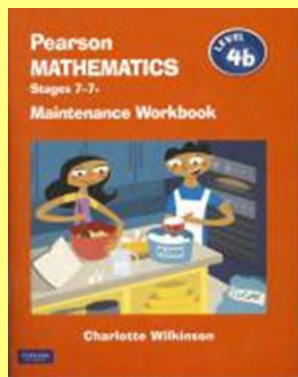


The books are written on workbooks and designed in weekly assignments (9 per term). They can be used for in class maintenance activity or as homework assignments. (Please note it is illegal to photocopy these books)

**RRP: \$10.99 each School Price: \$9.34 each**

**Also available at the same price:**

### Maintenance Workbooks for Level 4



[www.pearsoned.co.nz](http://www.pearsoned.co.nz) or [www.ncwilkinsons.com/wilkieway](http://www.ncwilkinsons.com/wilkieway)



# *The Wilkie Way*

*Newsletter June 2011*

## **ERO expectations after Numeracy Project**

How often do I hear “we have to do it this way because ERO expect .....

The Education Review Office have now published a document called:

### **Evaluation Indicators for School Reviews (2011)**

This document clearly sets out what ERO are looking for when they come into schools and the possible evidence sources.

I would like to focus this article on Dimension 2 Effective Teaching – some salient points.

#### **Teacher knowledge of curriculum, pedagogy and pedagogical content knowledge:**

- Teachers sequence their programmes to link previous and future learning, other learning areas and the key competencies in the NZC;
- Teachers undertake regular professional learning relating to pedagogy, their teaching areas and pedagogical content knowledge.

#### **Match to student knowledge, interests, needs & abilities:**

- Teacher develop clear learning goals based on knowledge of their students;
- Students’ learning activities and content are relevant, authentic and interesting;
- Student learning is carefully sequenced to build on their prior knowledge.

#### **Use a wide range of teaching methods/strategies:**

- Deliberate acts of teaching are targeted to students’ learning needs;
- Open ended questions are used to promote thinking and learning;
- The pace of learning is appropriate to students’ needs;
- Students spend most of their time purposefully engaged in learning;
- Teachers provide opportunities for students to work with others in a variety of ways within and between classes.

#### **Formative assessment:**

- Teachers co-construct appropriate learning intentions and success criteria with their students;
- Regular, specific and constructive teacher feedback on students’ work contributes to the next stage of learning.

#### **Teacher reflection and support:**

- Teachers use student assessment to reflect on the effectiveness of their teaching and to develop personal professional goals.

Nowhere does it say a maths lesson **must** consist of a three group rotation with a WALT for every 10 -15 minute group teaching session.



# The Wilkie Way

Newsletter June 2011

## Professional Development Opportunities:

Have you found it difficult to get the professional development you need – it has certainly been very difficult to try and provide it!

Most courses have been cancelled due to insufficient numbers enrolling. As the cost of putting on courses has increased, to keep the cost of the course reasonable the number of people enrolling has to increase to make the course viable.

One day courses in industry will now regularly cost up to \$1000. This is obviously not reasonable for schools that also have to add reliever costs to the course cost.

The following courses are still currently going ahead:

**Gisborne 28 June:** Developing Mathematical Thinking in Junior Classes (year 1 – 3)

**31 August:** Becoming Numerate (Year 3 – 10)

Contact [jennie@gisborne.net.nz](mailto:jennie@gisborne.net.nz) Full day Courses

**Hamilton 6 September:** Teacher Aides Supporting Numeracy

**7 September:** Becoming Numerate (year 3 – 10)

Contact [poundn@waikato.ac.nz](mailto:poundn@waikato.ac.nz) Full day Courses

**Tokoroa 4 August:** The teachers' side of Inquiry Learning

**8 September:** The students' side of Inquiry Learning

These courses will run from 4pm to 7pm (with a soup break) at \$75 per person for each course

Contact [charlotte@ncwilkinsons.com](mailto:charlotte@ncwilkinsons.com) Registrations close 2 August

**Nelson 12 July: Numeracy in NZ schools today:** for teacher aides, RTLB's, teachers new to the profession, teachers new to the country, anyone who wants to know.

This is a one day course: Cost \$200 per person

Contact [charlotte@ncwilkinsons.com](mailto:charlotte@ncwilkinsons.com) Registrations close 30 June

**Avoid disappointment: Do not leave it until the last minute to register for a course.**

## In school professional development:

**I provide custom built professional development to support schools in building teacher capability to ensure quality mathematics programme. Registrations of interest for 2012/13 accepted now. Contact [charlotte@ncwilkinsons.com](mailto:charlotte@ncwilkinsons.com)**



# The Wilkie Way

Newsletter June 2011

## Some problems to cause thinking

Mum made 10 muffins.

Dad ate 2, James ate 4 then Gran came round with 6 more muffins.

How many muffins are there?

Why do you think you got this answer?

Change how many muffins Dad and James ate and change how many muffins gran made to keep getting the same answer.



Mr Mana had 5 boxes of chippies in his shop. In each box are 12 packets.

He bought 3 more boxes of chippies and sold 64 packets.

How many packets of chippies has he left in his shop?



The school has 225 pupils to put into 11 classes.

The two youngest classes can have no more than 15 pupils.

The two top classes can have up to 25 pupils.

Remaining classes can have up to 21 pupils.

How many students will you put in each class?

(There a lots of possible solutions)



Debbie had \$28 cell phone credit.

She adds \$20 credit every 3 weeks.

She uses \$7 per week.

Will she ever run out of credit on her phone?

If so, in how many weeks will her credit run out?



If you not wish to receive this newsletter please hit reply and ask to be removed from the mailing list. If you know anyone who would like to receive the newsletter please send their email address to [charlotte@ncwilkinsons.com](mailto:charlotte@ncwilkinsons.com)